



# DUO LINE

Duo Line is a flexible clamp baluster railing system suitable for indoor and outdoor installations. Its highly scratch-resistant, anthracite grey powder-coated aluminium balusters are light and very affordable. To install the infill, simply push the powder-coated zinc adapters into the balusters and then install the infill holders on the adapters. Choose from bars, web, glass clamps, glass holders, glass adapters or Glass Frame Tube to create the look you want!



GOEDKEURING  
VOLGENS BB2012  
EUROCODES  
1990-1999:2011  
**NEN 2608**

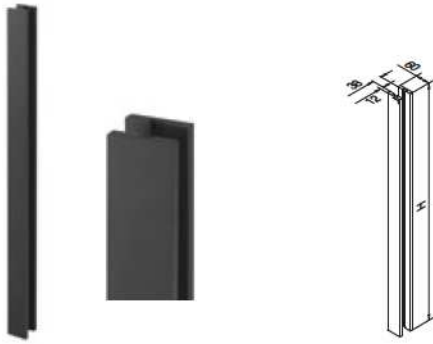
**STATISCHE  
BERECHNUNG**  
GEMÄß TRAV



Posts

POWDER-COATED

## DUO LINE - Baluster posts



## MOD 9545 / 9546

<b>Aluminium</b>	Anthracite grey RAL 7016	
<b>OUTDOOR</b>	H	
16.9545.060.33	1000 mm	1 Set
16.9546.060.33	1300 mm	1 Set



Posts

POWDER-COATED

## DUO LINE - End fittings



## MOD 9521

<b>Zinc</b>	Anthracite grey RAL 7016	
<b>OUTDOOR</b>		
10.9521.060.33		2



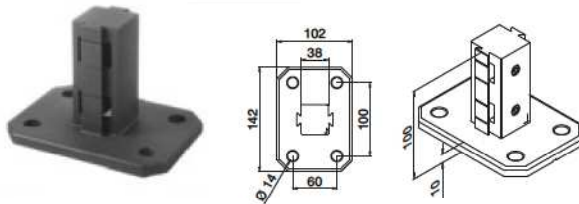
Combine Duo Line with our other well known infills and products.

Posts

POWDER-COATED

## DUO LINE - Balusters brackets

Top mount

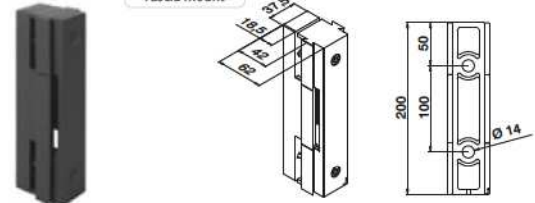


## MOD 9023

<b>Zinc</b>	Anthracite grey RAL 7016	
<b>OUTDOOR</b>		
10.9023.060.33	QS-559 340	1



Fascia mount



## MOD 9025

<b>Zinc</b>	Anthracite grey RAL 7016	
<b>OUTDOOR</b>		
10.9025.060.33	QS-559 340	1



Posts

POWDER-COATED

## DUO LINE - Cover caps



## MOD 9522

<b>Zinc</b>	Anthracite grey RAL 7016	
<b>OUTDOOR</b>		
10.9522.060.33		2

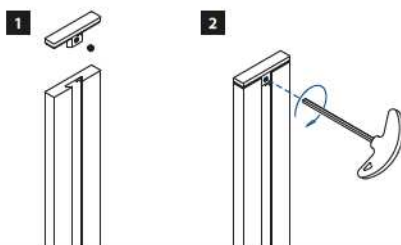


## MOD 9523

<b>Zinc</b>	Anthracite grey RAL 7016	
<b>OUTDOOR</b>		
10.9523.060.33		2

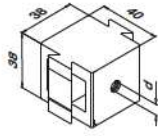


Q-INFO MOD 9545 / 9546 / 9521



For infills

Intermediate



**MOD 9002**

Zinc	Anthracite grey RAL 7016
OUTDOOR	d
10.9002.060.33	M6

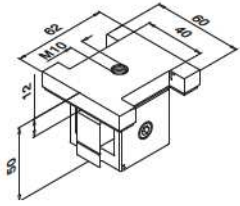
**MOD 9003**

Zinc	Anthracite grey RAL 7016
OUTDOOR	d
10.9003.060.33	M8



For handrail brackets

Top



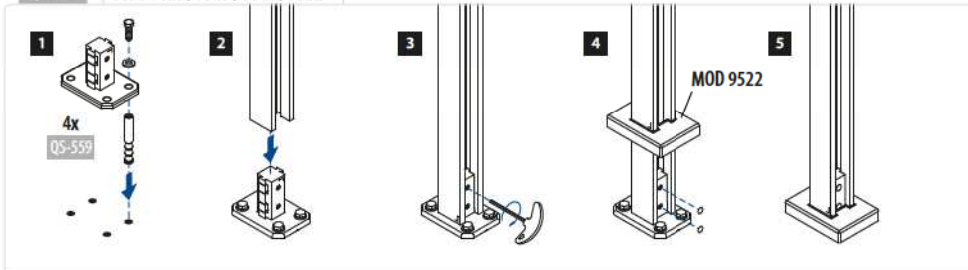
**MOD 9004**

Zinc	Anthracite grey RAL 7016
OUTDOOR	d
10.9004.060.33	2

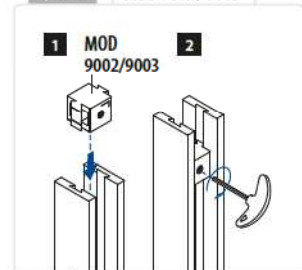


Combine Duo Line with our other well known infills and products.

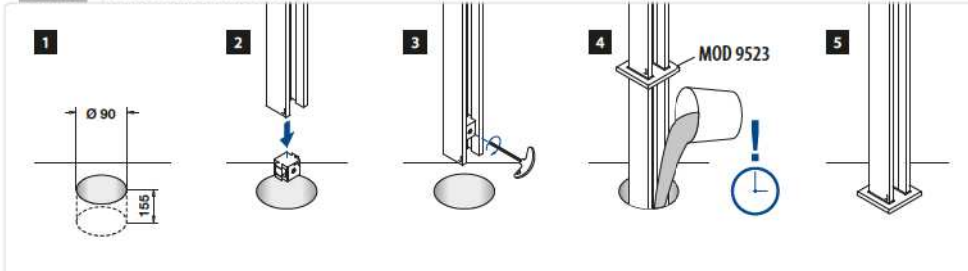
Q-INFO MOD 9023 / 9545 / 9546 / 9522



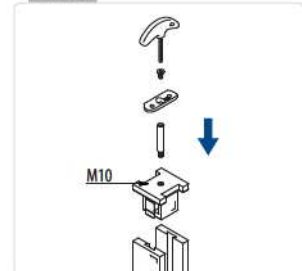
Q-INFO MOD 9002 / 9003



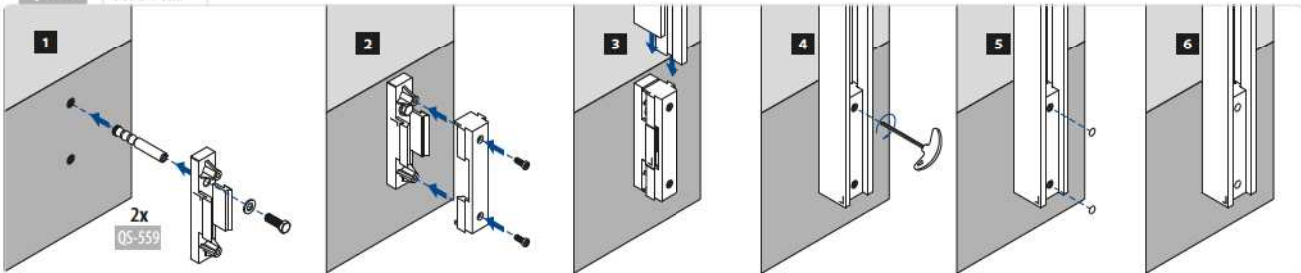
Q-INFO MOD 9545 / 9546 / 9523



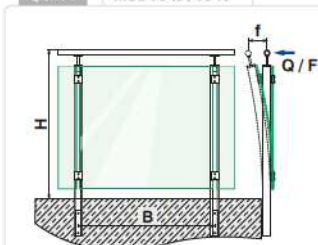
Q-INFO



Q-INFO MOD 9025



Q-INFO MOD 9545 / 9546



Duo Line (Static calculation)

	Q	F	Indoor		Outdoor		H (max)	f
			B (max)	B (max)	wind			
MOD 9545.060 / 9546.060	0,50 kN/m	-	1400 mm	1200 mm	0,70* kN/m <sup>2</sup>	1100 mm	< 25 mm	
	0,50 kN/m	1,00 kN/1 min.	1200 mm	1200 mm	2,34 kN/m <sup>2</sup>	1000 mm	< 20 mm	
	1,00 kN/m	-	1000 mm	900 mm	0,70* kN/m <sup>2</sup>	1100 mm	< 25 mm	
	0,80 kN/m	1,00 kN/5 min.	1200 mm	1200 mm	2,34 kN/m <sup>2</sup>	1000 mm	< 20 mm	

\* Line load and wind force combined

Posts

SATIN

DUO LINE - Adapters for glass adapter Spider



MOD 4724

316		
OUTDOOR		
14.4724.000.12	05-20	335
		2

NEW

Accessories

DUO LINE - Touch-up pencil



Touch-up pencil for scratch repair  
RAL 7016

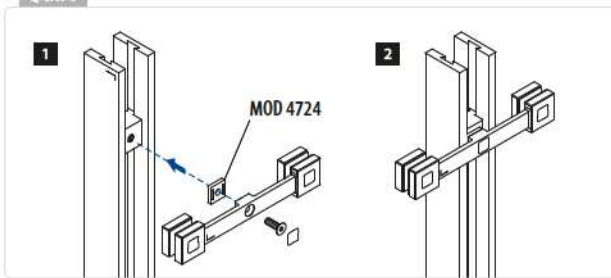
MOD 0800

Accessories	
19.0800.050.33	1

NEW

Combine Duo Line with our other well known infills and products.

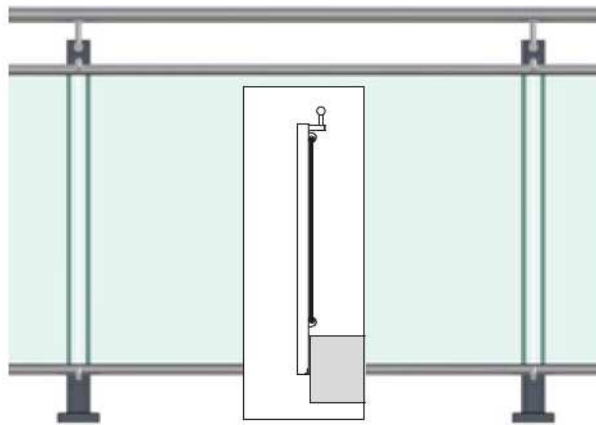
Q-INFO



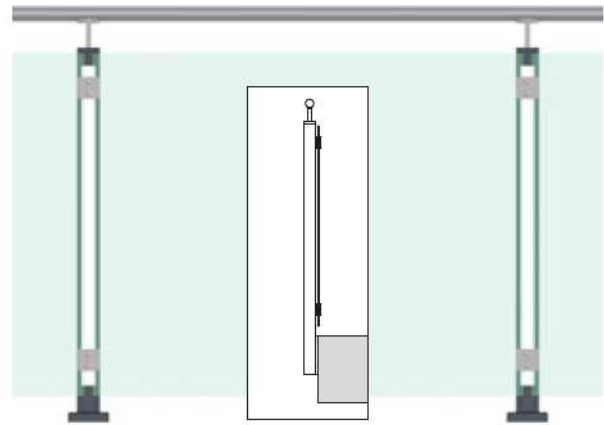
Infills

DUO LINE - Filling options

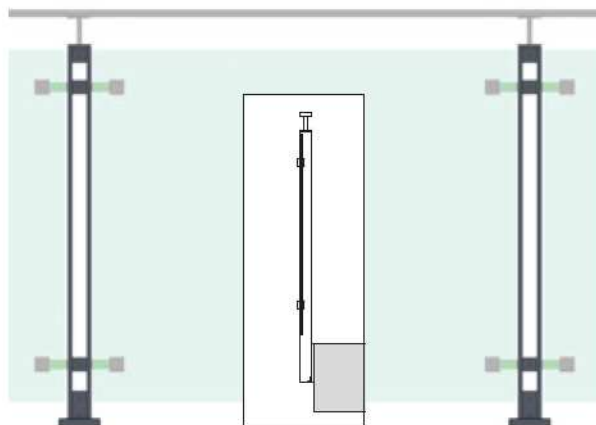
Q-INFO



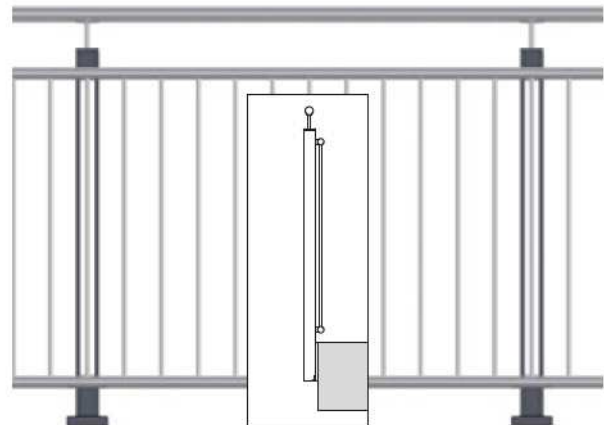
177 Glass Frame Tube



316 Glass clamps - MOD 52



322 Glass adapters - Spider MOD 4752



130 Picket rail / vertical bar filling